



# Multi-Purpose Offshore Support Vessel 'Limitless'



[www.offshoreunlimited.com.au](http://www.offshoreunlimited.com.au)





# LIMITLESS

Built 2010 by Richardson Devine Marine Hobart, Tasmania, Australia

## SURVEY

**Class** NSCV 2A, 1B  
**Reg Number** 859250  
**Call Sign** VMQ9679

## HULL

Aluminium symmetrical round bilge catamaran, fendering Bow, stern and sides, 8m open transom with boarding platform Rescue doors port and starboard

## DIMENSIONS

**Overall Length** 28.7m  
**Beam** 8.5m (excluding fenders)  
**Draft** 1.8m

## MACHINERY

**Main Engines** 2 x C32 Acert Caterpillar 1455hp  
**Gear Box** 2 x Twin Disc MGX6599SC with Quick Shift

**Propeller** 2 x Mikado five blade  
**Generators** 2 x Caterpillar 156kva  
**Bow Thrusters** 2 x Hydraulic 44kw

## SPEED

**Maximum** 28 knots  
**Operating** 24 knots @ 75% MCR

## CAPACITIES

**Cargo** 30 Tonne  
**Deck** 13 x 8m  
**Bollard Pull** 15 Tonne  
**Fuel** 30,000 ltrs  
**Water** 4500 ltrs plus 6000 ltrs per day desalinator  
**Black Water** 3000 ltrs plus 2000 ltrs per day MARPOL approved treatment plant  
**Power** 2 x 156 Kva Gensets 415v 50 Hz 3 Phase  
4 x 32 amp reefer outlets

## DECK EQUIPMENT

**Crane** Helia 6.7 tonnes @ 2.75m  
1.25 tonne @ 12.6m  
**Capstan** 2 Tonne  
**Moonpool** 1.2 x 1.2m  
**Tow Hook** Mampaey 15 tonne with remote release  
**Winch** 6 tonne WLL (optional)  
**A Frame** 5 tonne WLL luffing (optional)

## WHEELHOUSE

**Fully enclosed wheelhouse with all round visibility, twin helm chairs and charters work station**

**Radar** JRC JMA5210 72nm with ARPA  
Raymarine E120 48nm  
**Plotter** Sewia C-Map  
Raymarine E120 Navionics Charts  
Raymarine Raytech  
**GPS** JRC x 2, Raymarine E120  
**AIS** Furuno Class A  
**Sounder** JRC JU250  
Raymarine E120  
Interphase Sonar

## GMDSS

## Communications

JRC JUE85 Sat C  
JRC JMS 770S VHF  
JRC JSB 196GM HF  
Icom handheld GMDSS VHF  
Thrane & Thrane  
Fleet Broadband 250  
Iridium Openport 3 Lines  
Next G  
2 x ICOM UHF  
3 x Icom handheld VHF  
Intercom to all cabins, engine room and bridge  
Wireless Internet  
Colour Cameras to working deck, engine rooms  
Simrad AP28  
**Autopilot** Colorlight remote  
**Searchlight** Flir with remote control  
**Night Vision** Sunto  
**Compass** Thorn Monitor, FM200 auto suppression system  
**Fire System** McMurdo 406  
**EPIRB** 2 x 25man RFD SOLAS  
**Liferafts** Full medical locker and rescue stretcher  
**Medical** Narwhall SV400 SOLAS  
**Rescue Boat**

## ACCOMMODATION & LAYOUT

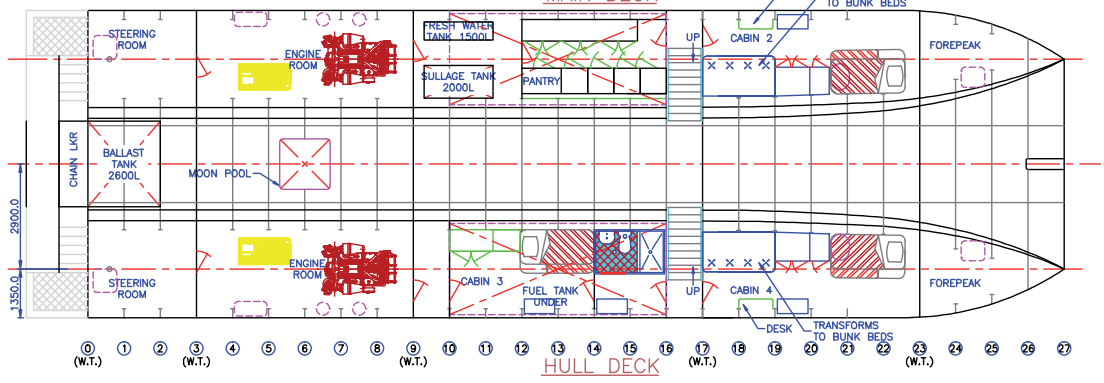
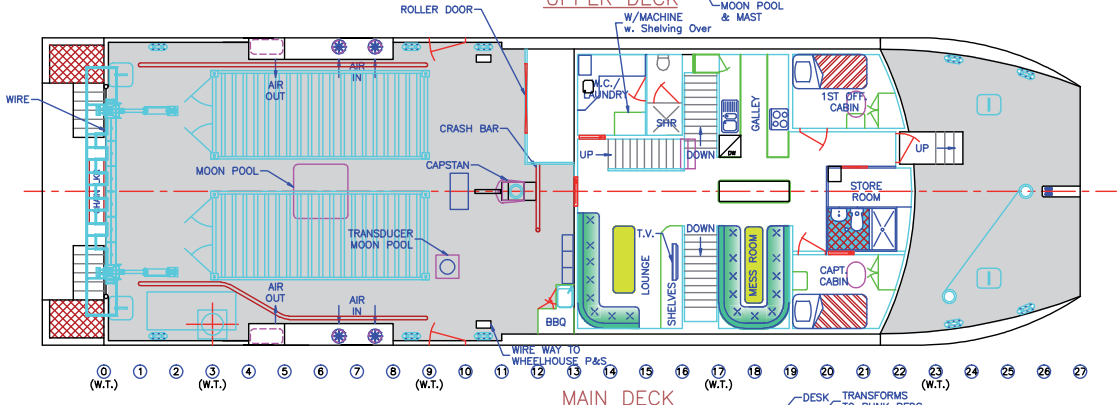
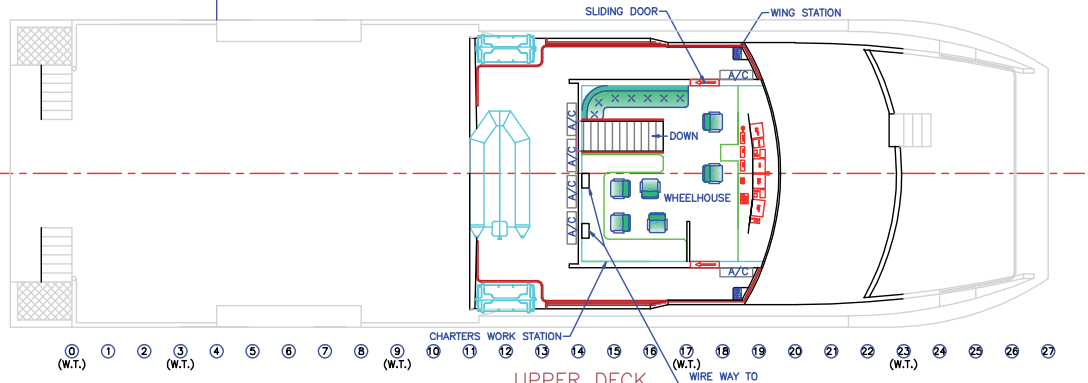
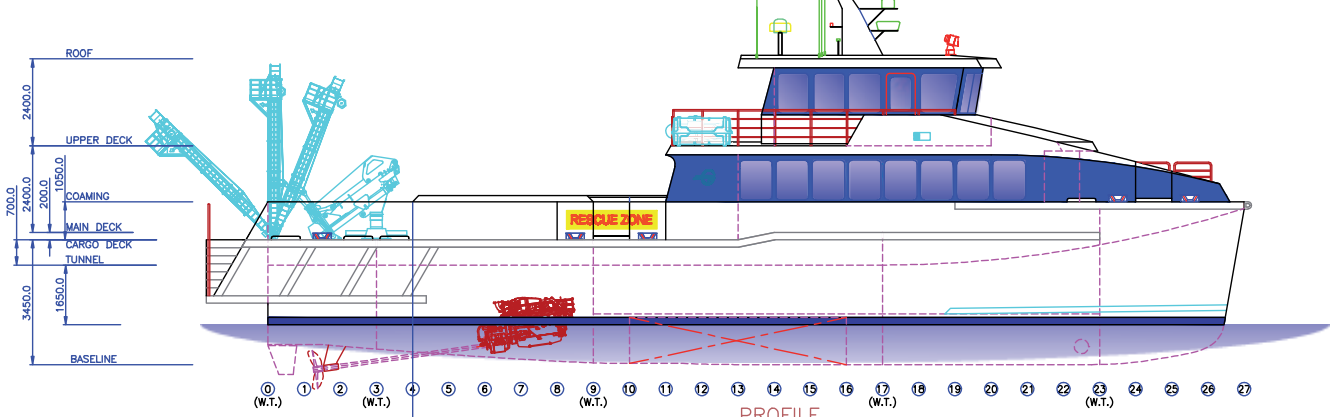
Total 14 berths in 5 cabins, fully air-conditioned, 14 persons overnight, 46 persons plus 4 crew day trip. TV and DVD in main saloon and each cabin, commercial galley and pantry with 3 x freezers and 3 fridges, filtered chilled water and ice, 3 x toilets and showers, washer and dryer, wet room.



# 'Limitless'

## SPECIFICATIONS

OVERALL LENGTH:	28.7 m
WATERLINE LENGTH:	26.4 m
BEAM (NOT INCLUDING SPONSONS):	8.5 m
DRAFT (PROP TIP):	1.8 m
CREW:	14
CONSTRUCTION:	ALUMINIUM
HULL:	ALUMINIUM
SUPERSTRUCTURE:	ALUMINIUM
FUEL OIL:	2x15000 litres
WATER:	1x1500 litres
PROPULSION:	PROPELLERS
ENGINES:	2 x CAT C32 ACERT
GENSETS:	1450HP @ 2300RPM
MAX DEADWEIGHT:	2 x 156kw
	50t



**OFFSHORE UNLIMITED PTY LTD**  
 info@offshoreunlimited.com.au  
 Tel 03 6235 7157 Fax 03 6235 7199  
 www.offshoreunlimited.com.au



**OFFSHORE UNLIMITED PTY LTD**  
info@offshoreunlimited.com.au  
Tel 03 6235 7157 Fax 03 6235 7199  
www.offshoreunlimited.com.au

